

STUTTON GREEN ENERGY

Together we have the power

Stutton Green Energy

Public Meeting

Monday 24 October 2011

Agenda

- ⏻ Welcome
- ⏻ Who are we?
- ⏻ What do we propose?
- ⏻ Why are we doing this?
- ⏻ How do we make money from a solar installation?
- ⏻ What is Stutton Green Energy?
- ⏻ When will it happen?
- ⏻ What is in it for me?
- ⏻ Questions
- ⏻ What next?

Who are we?

Stutton Green Energy Community Group

are concerned about the world problem of climate change and aim to promote a reduction in carbon emissions and help households to save on their energy bills

How long to turn this around?



It only takes a few to change?



How will we achieve this?

- ⏻ Developing a community based Solar electrical generation scheme that will benefit the community hall and community shop and enable local people to invest in the scheme, and to use surplus income to:
- ⏻ Raising awareness amongst local people about how to reduce energy costs and of any assistance available, and give extra help to those less able to do it for themselves
- ⏻ Developing other green energy initiatives which will benefit the local community.
- ⏻ Reducing CO₂ emissions for Stutton

What do we propose?

To install Solar Photo Voltaic (PV) panels on the roof of the Community Hall



Why are we doing this?

- ⏻ Community Shop spends approx. £250 a month on electricity. If we can reduce their electricity bill it will really help the shop's balance sheet
- ⏻ Community Hall is trying to keep hire charges as low as possible in the face of rising utility bills

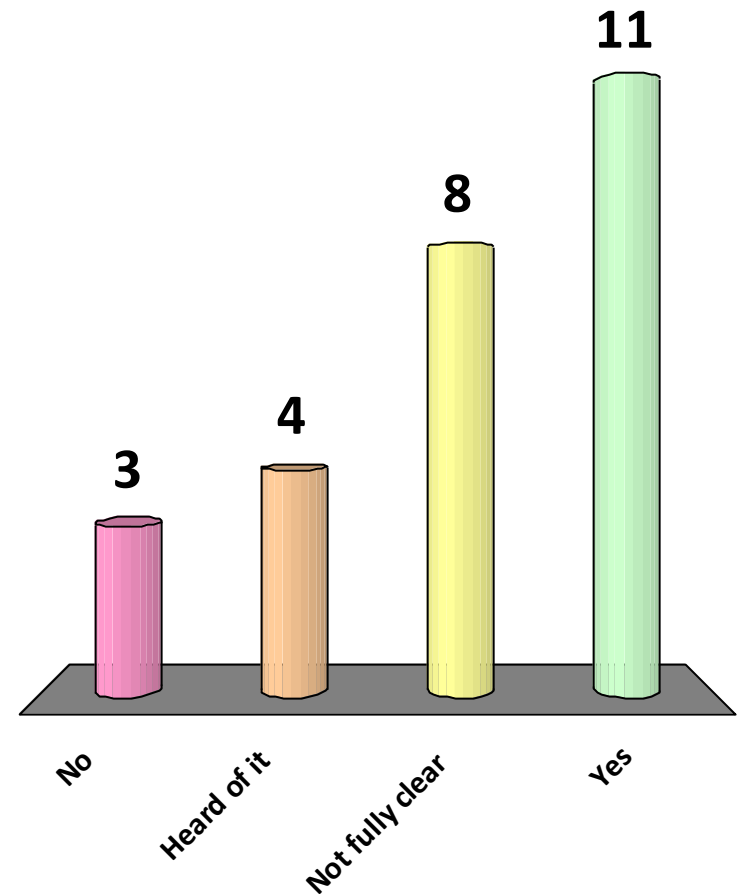
Grab your voting handset



**Avoid the GO button
or you will not be
able to vote**

Who knows how the Feed-In Tariff (FIT) works?

1. No idea
2. Heard of it, but don't understand it
3. Not fully clear to me
4. Yes I fully understand it



How do we make money from a solar installation?

- ⏻ If you install an electricity-generating technology such as solar PV, the government's Feed-In Tariff scheme (FIT) means you get money from your energy supplier.
- ⏻ You are paid for the electricity you generate, even if you use it yourself, and for any surplus electricity that you export to the grid. In addition, you will also save money on your electricity bill, because you will not be drawing so much electricity from the grid.
- ⏻ The feed-in tariff levels are guaranteed for 25 years and are index-linked.

How does the FIT work?

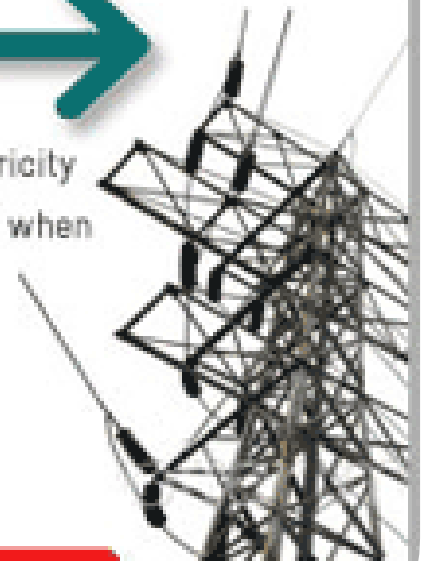


Electricity is created by solar panels. Your electricity supplier pays you for each unit of electricity you generate



You can use the electricity you generate meaning you don't have to import from the grid

You export electricity back to the grid when you don't use it. You are paid an export tariff



You import electricity from the grid when you need additional power

Projected Income from Feed-In Tariff (FIT)

	Year 1	Year 5	Year 15	Year 25
Feed-In Tariff (37.8p/kWh)	£2819	£3120	£4020	£5180
Export Income (3.1p/kWh)	£116	£128	£165	£212
Total payment	£2935	£3248	£4185	£5392
Electricity saving	£447	£632	£1497	£3547

Assumptions:

- FIT @ 37.8p/kWh
- Export income – assumed 50% exported @ 3.1p/kWh
- Electricity saving @ 12.0p/kWh
- General inflation (Retail Price Index) @ 3.5%, year on year
- Fuel inflation @ 10%, year on year

What is **STUTTON GREEN ENERGY**?

- ⏻ **Community Benefit Society**
- ⏻ **Run by the community for the community**
- ⏻ **Owned by members**
- ⏻ **One member one vote**
- ⏻ **Rules approved by Financial Services Authority (FSA)**
- ⏻ **Solar Panels can't be sold**

What are the associated costs?

- ⏻ Start-up costs – money already being raised
- ⏻ Capital costs – need money from investors
- ⏻ On-going yearly costs (e.g. Insurance)

How will the income from the FIT be used?

After on-going costs:

- ⏻ Interest to investors
(approx. 2.5 - 4% return)
- ⏻ Funding community projects
- ⏻ Payment to Community Hall for use of roof

When will it happen?

**As soon as possible, preferably before April 2012
when the Feed-In Tariff subsidy reduces**

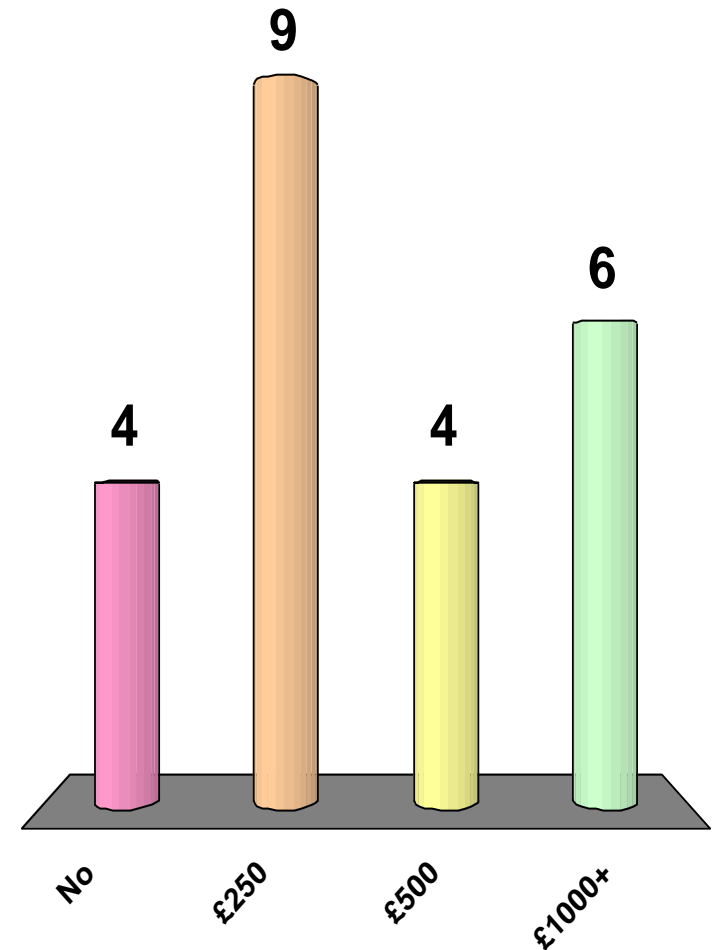
What is in it for me?

- ⏻ You can be part of a community scheme to help ensure the long-term viability of both the Community Hall and Community Shop
- ⏻ You can receive a modest return on your investment
- ⏻ You can help to raise funds for our local community
- ⏻ We recognise that this is not an investment that you make for financial reasons, but one you make for social reasons, which will benefit the community in which we live and ensure the long-term viability of the Shop and Community Hall

Are you interested in investing?

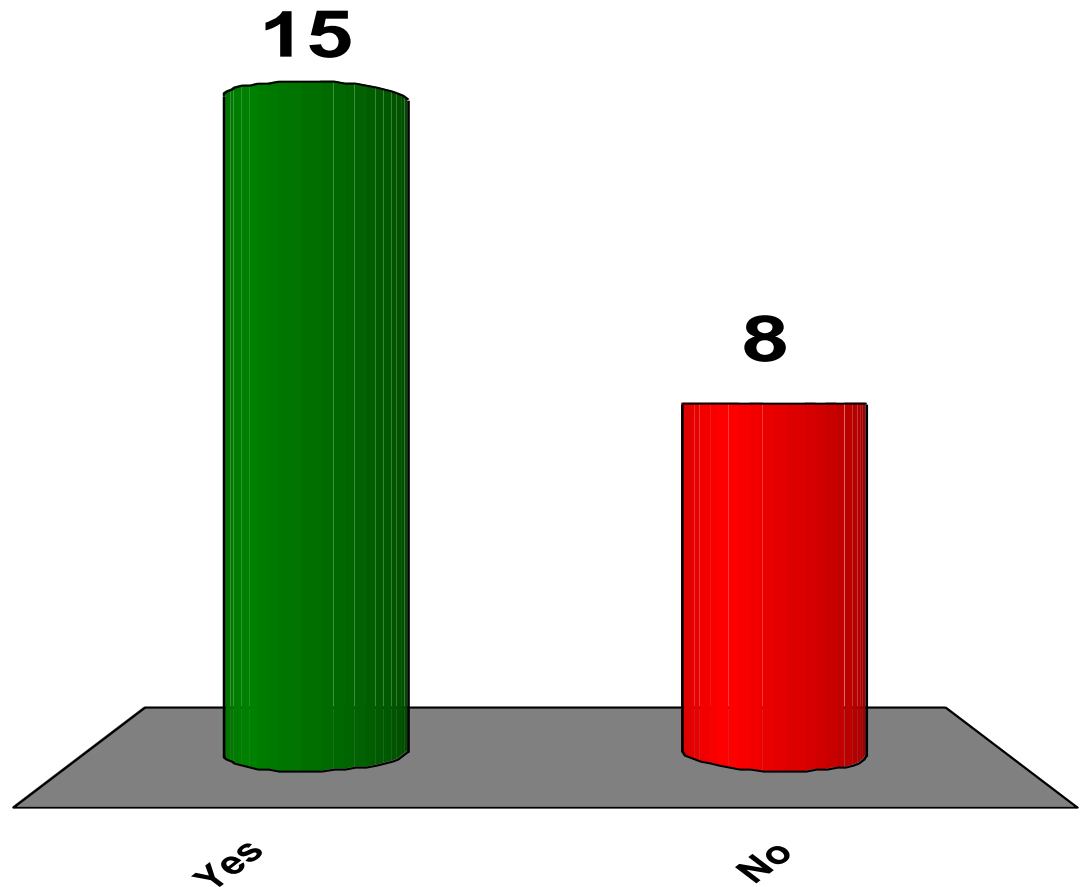
Poll – No commitment!
To gauge interest in our proposal,
are you interested in investing?

1. No thank you
2. Yes - £250
3. Yes - £500
4. Yes - £1000 or more



Would you like to be involved in the community group?

1. Yes
2. No



Questions?

What Next?

- 🔌 Community Group
- 🔌 Fill out our interest slip